



SUMMER CAMP

PARENT NEWSLETTER

May 2023



WHAT'S INSIDE

GENERAL INFO	-1-	TRANSPORTATION	-5-
FRIEND REQUESTS	-2-	CAMPER FORMS	-6-
PAYMENTS & SUBSIDY	-2-	MEET THE STAFF	-7-
OPEN HOUSE INFORMATION	-3-	KID'S CORNER	-8-
DIRECTIONS TO CAMP	-4-	ALUMNI	-9-

A NOTE FROM THE CAMP TEAM:

Wow! Can you believe we are only a couple of months away from summer? The sun is shining, the temperatures are warming up, and there is barely any snow left at camp. We are getting more eager to meet the summer campers as the days go on.

This newsletter brings you some information about your camper forms and how to communicate with your camper while they are here. In addition, we have begun our spring training which brings LOTS of new counsellors to site. We have featured even more staff here so you and your campers can start to get to know our team before arrival.

Don't forget about our Open House this month!

We look forward to seeing you all there for a fun afternoon exploring our site.

Taylor Hodson

Assistant Camp Director, Camp Chief Hector YMCA



Camp Chief Hector YMCA is situated on the Ancestral Lands of the Stoney Nakoda People including the Goodstoney, Chiniki, and Bearspaw. YMCA Calgary is also situated on the Ancestral Lands of the Blackfoot Confederacy: Siksika, the North and South Piikani Nations, and the Kainai Tribe, including members of Treaty 7 First Nations, the Tsuut'ina Nation, and the Metis Nation of Alberta, Region III, and all those who make their home in this area.



THANK YOU

**FOR REGISTERING FOR
OUR 2023 SUMMER PROGRAMS**

2023 NEWSLETTER INFORMATION

Each month, we will publish a newsletter similar to this with information to get you and your camper prepared to join us in our summer programs. It will be sent to you and published mid-month on our website. Below is a list of topics included in the upcoming newsletters.

EVERY ISSUE

- Contact Information for CCHY
- Kid's Corner- for the campers!
- Meet the Staff Feature
- Alumni Information

MARCH

"Preparing Emotionally for Camp for both Campers and Parents"

APRIL

"Let's get sorted! Packing Information, Camper Medical Forms, and Transportation Information"

MAY

"Communication: with your camper and with us during summer"

JUNE

"Last Steps: Camper Checklist and Final Reminders"

FRIEND REQUESTS

Camp is a place for everyone to make new friends and to spend time with friends you have met before!

If your camper would like to be in the same group as a friend, you will submit a "Friend Request" when providing your camper's information. More information on 'when' and 'how' to provide this information and make Friend Requests will be available in the SPRING.

Please note: we cannot accept friend requests via email and requests may only be made for campers enrolled in the same program and session (i.e. a Mistaya camper cannot request a Kananaskin camper.)



PARENT AND GUARDIAN INFORMATION NIGHTS

Each month, we will be providing drop-in information sessions held at Shane Homes at Rocky Ridge YMCA in Calgary, AB for registered participants. These sessions will include the following:

- review the information provided in our newsletters in greater detail
- ask questions regarding your camper's registration
- This is DROP IN, no registration is required.
- Bring your questions or your nervous camper to talk to camp staff and get some answers and get comfortable!

MAY 31st



Multi-purpose Room 1
4:30 - 6:00 pm



CAMP FOR EVERYONE!

We support campers and families that are in financial need to send their kids to camp. If you are interested in donating to this cause, please click the link here to become a donor:

[Let's Raise](#)

NEED FINANCIAL ASSISTANCE?

We have subsidies available to help with camp fees for those campers who may not otherwise be able to attend. If you would like further information or to start your eligibility assessment, please send an email to

cchy@calgary.ymca.ca

COME MEET
THE STAFF TEAM,
ASK YOUR
QUESTIONS AND
SEE THE CAMP FOR
YOURSELF!

CCHY OPEN HOUSE

FOR ALL
SUMMER CAMP
PROGRAMS

MAY 28th



3:00 - 5:00 pm

Bowfort Lodge
Day Camp
Chiniquay

4:00 - 6:00 pm

Hector Lodge
Mistaya Pioneer
Kananaskin Leadership
Leader in Training
Wrangler in Training

PLEASE

Wear comfortable shoes as there will be full site tours
Bring family members, siblings, but **do not bring pets**
Bring your questions, your camera and your excitement!



Directions to Camp Chief Hector YMCA

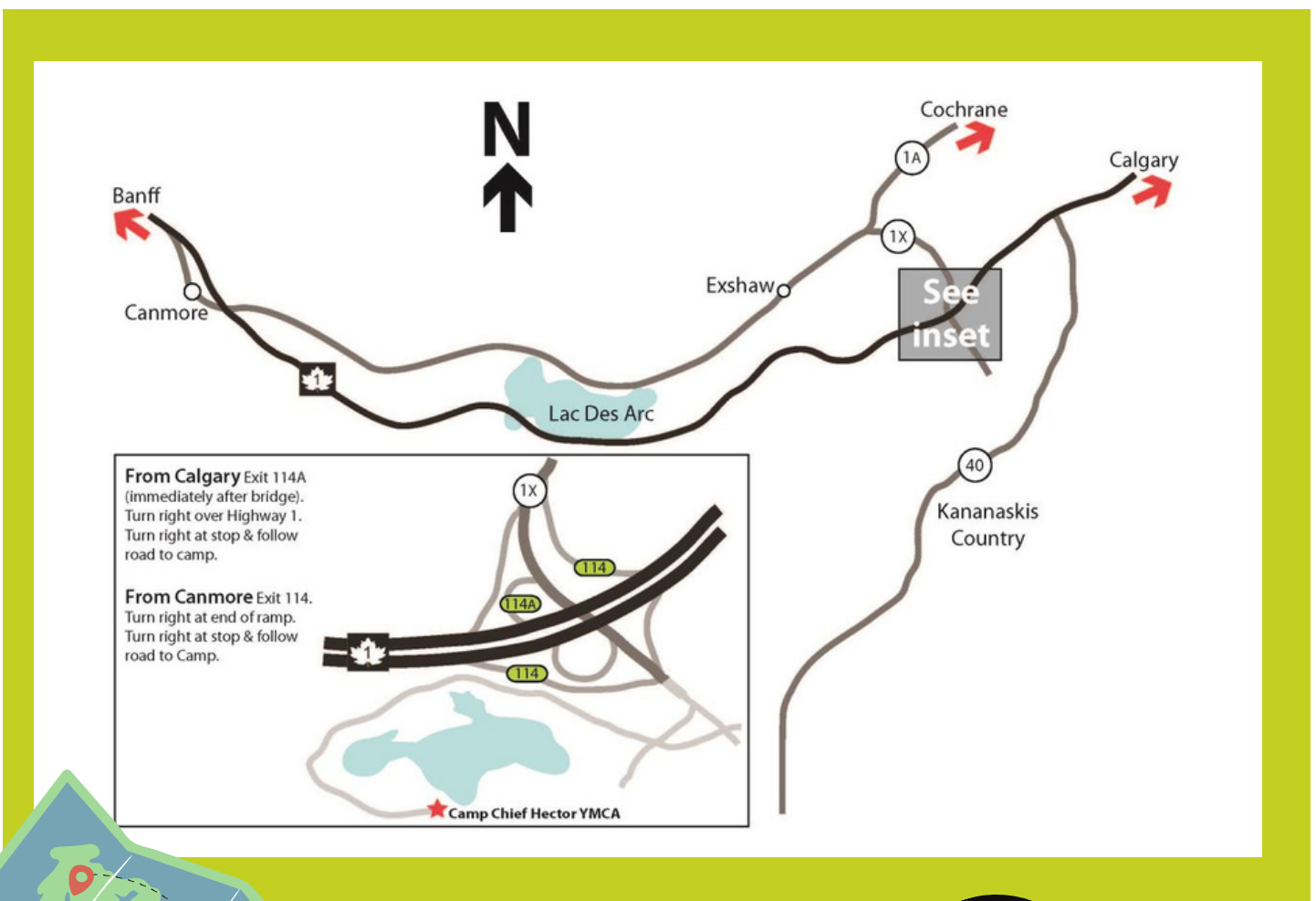
Note: Google maps often, incorrectly, shows Camp at the Exshaw Post Office (where our mail is delivered). Our site is located 8km west of the intersection of Highway 1 and Highway 1X. Following the directions below will ensure your trip to camp is smooth and direct.

From Calgary

Travel west on Highway 1 (Trans-Canada Hwy.) approximately 75 km from Calgary city limits. Exit onto Highway 1X South (Rocky Mountain YMCA exit number 114A). This is a dual exit; 114A is the second one. The road takes you across the highway to a STOP sign at a “T” intersection. Turn right and follow the road to the camp gate. From the camp gate follow **YMCA Road** to Bowfort Lodge and Bowfort parking lot. Hector Lodge and parking is 2km further along the road.

From Canmore

Travel east on Highway 1 (Trans-Canada Hwy.) approximately 25 km from Canmore. Take the Rocky Mountain YMCA exit. The exit is clearly marked with a green highway sign to your right. The road takes you to a STOP sign at a “T” intersection. Turn right and follow the road to the camp gate. From the camp gate follow **YMCA Road** to Bowfort Lodge and Bowfort parking lot. Hector Lodge and parking is 2km further along the road.



Getting your Camper to Camp!



OVERNIGHT CAMPS

BUS FROM CALGARY

Bussing fee is included in your registration and is available from Shane Homes at Rocky Ridge YMCA.

Heading to Camp
(First Day of Session)

Check In Begins at 11:30 am
Busses Leave at 12:30 pm

Returning from Camp
(Last Day of Session)

Bus Arrives in Calgary at 10:30 am

DRIVING YOUR CHILD IN PERSONAL VEHICLE

Heading to Camp
(First Day of Session)

Check In Begins at 2:00 pm, must arrive before 4:00 pm

Returning from Camp
(Last Day of Session)

Pick up begins at 10:00 am, must pick up before 11:30 am

PLEASE NOTE:



All Pioneer CANOE and Leadership Campers will be required to take the bus to camp-- as they need to take a swim test prior to arriving at camp. Information is available on next page.

DAY CAMPS

We do not offer Day Camp bussing from Calgary.

BUS FROM BOW VALLEY AREA TO CAMP

Lawrence Grassi School	8:10 am
Elizabeth Rummel School	8:30 am
Exshaw Legion	8:55 am

FROM CAMP

Lawrence Grassi School	4:55 pm
Elizabeth Rummel School	4:40 pm
Exshaw Legion	4:15 pm



DRIVE IN PERSONAL VEHICLE

Drop Off 8:30 am - 9:00 am

Pick Up 4:00 pm - 4:30 pm





CAMPER FORMS WILL BE EMAILED TO YOU MID MAY

We have transitioned to a new platform called CampBrain and these forms will include friend requests. You will be emailed instructions for your forms.

Communicating with your Camper!

NEW TO 2023: You will be able to send your camper notes throughout the summer through Campbrain— a great way to communicate with your camper while they are here!

Tips & Tricks: send your camper with a pre-addressed envelope and paper for their stay at camp. Then, they can easily write you a letter home while they are here! This is a great way to decrease homesickness AND ensure you get the letter with the correct address!

DO NOT send your camper with a phone or iPad.

We practice “disconnecting to re-connect—to self and nature”.

During summer, you can communicate with us via email, Campbrain, or in emergencies give us a call at 403-673-3858

MEET THE STAFF

Each newsletter, we will introduce you to a few members of our staff team here at Camp Chief Hector YMCA. We look forward to meeting you this summer in person!



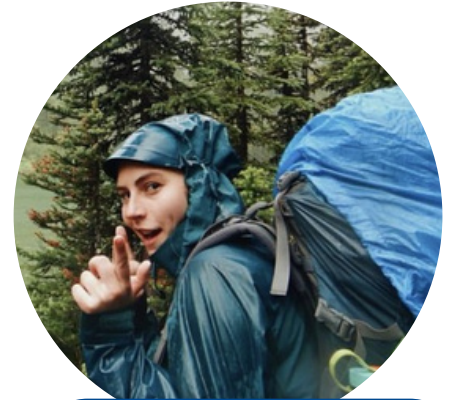
Emily

Bowfort Lodge Coordinator



Katie

Expedition Coordinator



Anouk

Sac Dene Counsellor



Becca

Kananaskin Counsellor



Nolan

Pioneer Canoe Counsellor



Ellie

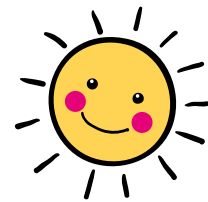
Waterfront & Resource Staff

**SUMMER 2022
PROGRAM LEAD
TEAM**





KID'S CORNER



SHARE THIS PAGE WITH YOUR CAMPER TO GET THEM EXCITED FOR CAMP



I sometimes run, but cannot walk. You also follow me around! What am I?



What do you get when you cross a snail with a porcupine?
A slowpoke!



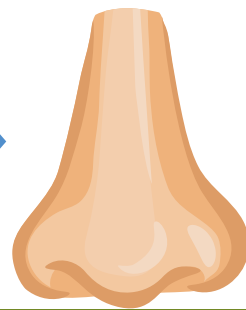
NATURE FACT

Usnea (sometimes called Old Man's Beard) is a lichen found around camp! You'll need to look up as it hangs from tree branches in dense forested areas. It's completely edible—in fact, it's high in Vitamin C! It makes a great fire starter, so ask your counsellor to find some and test it out along your trails.

RIDDLE ANSWER:

Your nose!

In case you missed the riddle, go back to page 8.



Reconnect with Camp

Did you spend your summers hiking through the mountains at camp?

Reconnect with us through our Camp Chief Hector YMCA Alumni Program.

Fill out the survey by clicking the button below and sign up for our newsletter!

Alumni Survey



WE ARE EXCITED TO SEE YOU THIS SUMMER!

LOOKING FOR MORE INFORMATION?



EMAIL US:

cchy@calgary.ymca.ca



CHECK OUR WEBSITE:

[Camp Chief Hector Website](#)